

## ● Wood products and timber trade

Wood products output in 2004

|                                   | Removals                         |  |
|-----------------------------------|----------------------------------|--|
|                                   | total<br>(1,000 m <sup>3</sup> ) | ratio in assortment<br>composition (%) |
| Logs for panel products           | 75258                            | 1.3                                    |
| Sawlogs                           | 1127700                          | 19.9                                   |
| Other raw material for sawmilling | 372017                           | 6.6                                    |
| Pitwood                           | 12117                            | 0.2                                    |
| Pulpwood                          | 653267                           | 11.6                                   |
| Bolt for panels                   | 555391                           | 9.8                                    |
| Other industrial wood             | 186796                           | 3.3                                    |
| Technological chips               | 5365                             | 0.1                                    |
| Total industrial wood             | 2987911                          | 52.8                                   |
| Fuelwood                          | 2672047                          | 47.2                                   |
| <b>Total removals</b>             | <b>5659958</b>                   | <b>100.0</b>                           |

<sup>1</sup>National distribution calculated on the basis of a 66 % sample. Source: State Forest Service

Output of selected products in 2004<sup>1</sup>

|                                     | Unit                   | Quantity |
|-------------------------------------|------------------------|----------|
| Coniferous sawnwood                 | 1,000 m <sup>3</sup>   | 80.6     |
| Broadleaved sawnwood                | "                      | 118.6    |
| Parquet frieze                      | "                      | 45.5     |
| Furniture strips and parts          | "                      | 5.7      |
| Pallets                             | "                      | 152.1    |
| Wood particle board                 | "                      | 520.8    |
| Laminated particle board            | "                      | 398.7    |
| Cement-bonded particle board        | "                      | 22.5     |
| Fibreboard                          | "                      | 52.8     |
| Surface-treated fibreboard          | "                      | 24.5     |
| Flat-pressed, moulded, laminated b. | "                      | 23.7     |
| Plywood                             | million m <sup>2</sup> | 42.9     |
| Veneer sheets                       | 1,000 m <sup>2</sup>   | 2443.5   |
| Match                               | million boxes          | 170.0    |

<sup>1</sup>Data from large-scale and medium industries appointed for contributing data by the Ministry of Agriculture. Source: State Forest Service

Timber trade in 2003

|                                 | Export        | Import        | Balance        |
|---------------------------------|---------------|---------------|----------------|
| Solid wood products             | 18623         | 16658         | 1965           |
| Sawn wood products              | 21033         | 44872         | -23839         |
| Panel products                  | 23822         | 36167         | -12345         |
| Miscellaneous wood              | 45965         | 23114         | 22851          |
| <b>Total wood products</b>      | <b>109443</b> | <b>120811</b> | <b>-11368</b>  |
| <b>Pulp- and paper products</b> | <b>124201</b> | <b>240650</b> | <b>-116449</b> |
| <b>Total</b>                    | <b>233644</b> | <b>361461</b> | <b>-127817</b> |

Forrás: ÁESource: State Forest Service, Data as of Dec. 31, 2003.

## ● Forest protection and natural conservation

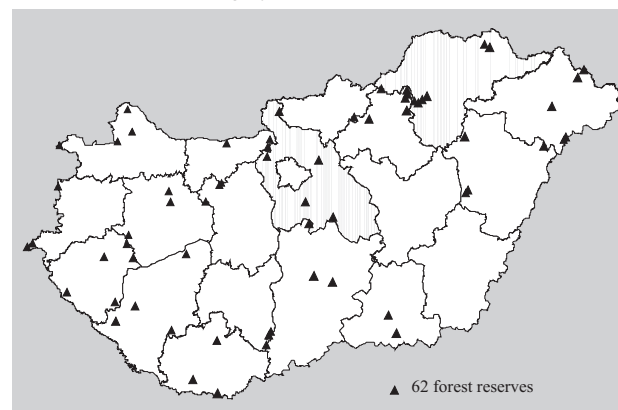
Protected natural areas

|   | Total area<br>(1,000 ha) | Forest area<br>(1,000 ha) |
|---|--------------------------|---------------------------|
| National parks (10)                           | 484.5                    | 204.5                     |
| Landscape protection areas (36)               | 316.5                    | 171.0                     |
| Protected natural areas (142)                 | 27.6                     | 12.0                      |
| <b>Protected areas of national importance</b> | <b>828.5</b>             | <b>387.5</b>              |

Source: Ministry of Environmental Protection and Water Management, Office for Nature

46 % of protected lands of national importance are covered by forests. Restrictions in management of these forests are contained in LIII Act of 1996 on natural conservation.

Forest reserves in Hungary:



## ● Organisational structure

Forest administration

Ministry of Agriculture and  
Rural Development  
(FVM)

FVM  
Forestry Department

State Forest Service  
(10 directorates)

Forest management planning, official  
supervision of forest managements

Other authorities concerned with forestry:  
- FVM OMMI, Forestry Department  
Inspectorate of propagative materials

- FVM Department of Fishing, Hunting and  
Water Management

Official supervision of game management  
- Ministry of Environmental Protection and  
Water Management (KvVM), Office for  
Nature Conservation, Department of  
Forestry and Landscape Protection

Official supervision of nature conservation in forests  
on protected natural areas.

Forest research:

Forest Research Institute (ERTI), Budapest  
University of West Hungary (NyME), Sopron

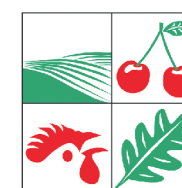
Professional training:

Higher education: Nyugat-Magyarországi Egyetem, Sopron  
Professional secondary schools: Szeged, Sopron, Mátrafüred, Barcs  
Trade schools: Ásotthalom, Szócénypuszta, Piliscsaba,  
Miskolc

Executive publisher: András Klemencsics, Head of Department of Forestry, FVM, www.fvm.hu  
Compiled by: Károly Wisnovszky, mandatory director general, State Forest Service, www.aesz.hu  
Edited by: Péter Kottek, dr. András Pluzsik, Csaba Mózes; Photo: László Ruttikay



# FOREST RESOURCES, FORESTRY AND WOOD MANAGEMENT IN Hungary



Published by  
**MINISTRY OF AGRICULTURE AND RURAL  
DEVELOPMENT,  
Forestry Department**

Budapest, 2005.

## ● Notable milestones in the history of modern Hungarian forestry

|         |  |
|---------|--|
| 1791    | The Parliament enacted the first feudal forest act.  |
| 1879    | Enactment of the first modern civil forest act.  |
| 1920    | As a result of the peace-treaty closing the First World War, Hungary lost 84 % of its forests, and forest cover decreased from 26 % to 12 %.   |
| 1935    | The IV Act of 1935 was not just a forest act adjusted to the new geographical conditions of the country, but also the first Hungarian law on nature conservation to be promulgated.                                |
| 1936    | Hungary hosted the second World Forestry Congress and the 9th Congress of IUFRO.   |
| 1945    | Private forest holdings exceeding 58 hectares were nationalised, properties of 6 to 58 hectares were taken into state management.  |
| 1959-60 | Forest joint tenures were cut back, about 30 % of the forests were assigned to agricultural cooperatives.  |
| 1961    | Enactment of the VII Act of 1961 on forests and wildlife management based on the socialist ownership culture.  |
| 1996    | As a result of the change of system, about 40 % of forests were privatised. The legislative control for multiple-use and sustainable forestry is provided in LIV Act of 1996 on forests and protection of forests. |

## ● Main objectives of current Hungarian forest policy

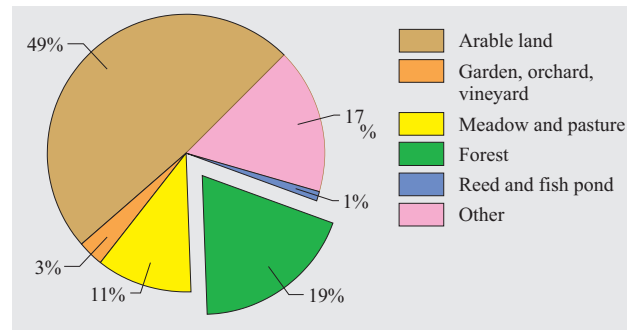
- To ensure long term environmental, economic and social services of forests with sustainable multi-use forest management.
- To harmonize the interest of the society in sustainable forest management with the interests of owners and managements.
- To maintain natural or close-to-natural forest stands composed by indigenous tree species and extend their area in accordance with prevailing site conditions.
- To increase the forested lands with afforestation up to the forest ratio of approximately 25-26 %.

## ● Comprehensive facts

|   |                            |        |
|---|----------------------------|--------|
| Total area of the country                 | 1,000 ha                   | 9303.0 |
| Population                                | millions                   | 10.1   |
| Forest land area                          | 1,000 ha                   | 1842.8 |
| Forest ratio                              | %                          | 19.8   |
| Forest area per 1,000 inhabitants         | ha/1,000 cap.              | 181.8  |
| Area of land in forestry use              | 1,000 ha                   | 1973.6 |
| Growing stock                             | million gr. m <sup>3</sup> | 334.3  |
| Gross annual increment                    | million                    | 12.5   |
| Total fellings                            | million gr. m <sup>3</sup> | 7.1    |
| Final cutting                             | million gr. m <sup>3</sup> | 4.8    |
| Area of final cutting                     | 1,000 ha                   | 21.0   |
| Regeneration (initial planting per year)  | 1,000 ha                   | 21.5   |
| Afforestation (initial planting per year) | 1,000 ha                   | 7.6    |
| Ratio of forests under management plans   | %                          | 100.0  |

Sources: Hungarian Central Statistical Office (KSH) Data as of Jan 1., 2004  
State Forest Service (AESZ), National Forestry Database  
AESZ "Report on Forestation and Fellings in 2004"

## ● Area by categories of land use



Source: Hungarian Central Statistical Office (KSH) Data as of May 31, 2004.

## ● Forest area according to the National Forestry Database

| as of Jan. 1, 2004.  | (1,000 ha) | ratio (%) |
|--|------------|-----------|
| Forest area (covered by tree stands or earmarked for plantation) | 1836.4     | 19.7      |
| Other wooded lands (nurseries, rides, permanent clearings)       | 131.2      | 1.4       |
| Total area of land in forestry use                               | 1967.6     | 21.1      |

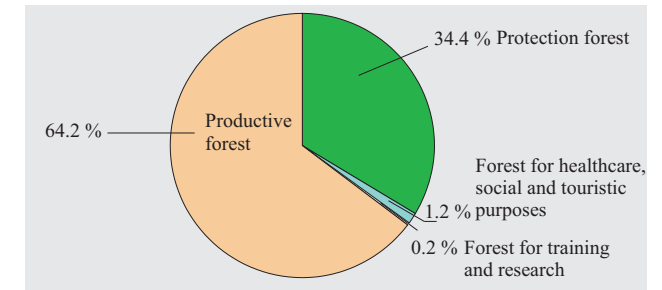
## ● Forested lands and ownership categories in the counties

| County                | Area (km <sup>2</sup> ) | Forest l. area (km <sup>2</sup> ) | Forest ratio (%) | In forestry use (km <sup>2</sup> ) | State (%)   | Communal (%) | Private (%) | Unknown (%) |
|-----------------------|-------------------------|-----------------------------------|------------------|------------------------------------|-------------|--------------|-------------|-------------|
| Pest and Budapest     | 6918                    | 1643                              | 23.8             | 1762                               | 61.0        | 1.1          | 37.5        | 0.4         |
| Central Hungary       | 6918                    | 1643                              | 23.8             | 1762                               | 61.0        | 1.1          | 37.5        | 0.4         |
| Fejér                 | 4359                    | 538                               | 12.4             | 621                                | 74.1        | 1.2          | 24.6        | 0.2         |
| Komárom-Esztergom     | 2265                    | 607                               | 26.8             | 655                                | 81.6        | 0.5          | 17.7        | 0.1         |
| Veszprém              | 4493                    | 1311                              | 29.2             | 1515                               | 64.3        | 0.3          | 35.4        | 0.0         |
| Central Transdanubia  | 11117                   | 2457                              | 22.1             | 2791                               | 70.7        | 0.6          | 28.6        | 0.1         |
| Győr-Sopron-Moson     | 4208                    | 807                               | 19.2             | 897                                | 69.8        | 0.4          | 29.8        | 0.0         |
| Vas                   | 3336                    | 932                               | 27.9             | 983                                | 50.3        | 0.4          | 49.3        | 0.0         |
| Zala                  | 3784                    | 1132                              | 29.9             | 1207                               | 54.4        | 0.3          | 44.0        | 1.3         |
| Western Transdanubia  | 11328                   | 2871                              | 25.3             | 3087                               | 57.4        | 0.3          | 41.7        | 0.5         |
| Baranya               | 4430                    | 1078                              | 24.3             | 1136                               | 54.6        | 1.2          | 34.1        | 10.0        |
| Somogy                | 6036                    | 1697                              | 28.1             | 1816                               | 57.4        | 0.7          | 35.7        | 6.3         |
| Tolna                 | 3703                    | 640                               | 17.3             | 690                                | 56.3        | 0.4          | 27.9        | 15.4        |
| Southern Transdanubia | 14169                   | 3415                              | 24.1             | 3641                               | 56.3        | 0.8          | 33.7        | 9.2         |
| Borsod-A-Z.           | 7247                    | 1978                              | 27.3             | 2077                               | 62.2        | 1.1          | 28.9        | 7.8         |
| Heves                 | 3637                    | 850                               | 23.4             | 887                                | 61.1        | 0.4          | 37.7        | 0.8         |
| Nógrád                | 2546                    | 956                               | 37.6             | 994                                | 57.1        | 0.2          | 40.9        | 1.9         |
| Northern Hungary      | 13430                   | 3785                              | 28.2             | 3958                               | 60.7        | 0.7          | 33.9        | 4.7         |
| Hajdú-Bihar           | 6211                    | 643                               | 10.4             | 683                                | 46.9        | 0.9          | 38.1        | 14.1        |
| Jász-Nagykun-Szolnok  | 5582                    | 316                               | 5.7              | 339                                | 42.3        | 2.3          | 46.9        | 8.5         |
| Szabolcs-Szatmár-B.   | 5936                    | 1055                              | 17.8             | 1091                               | 29.8        | 1.3          | 53.0        | 15.8        |
| Northern Great Plain  | 17729                   | 2014                              | 11.4             | 2113                               | 37.2        | 1.3          | 47.3        | 14.1        |
| Bács-Kiskun           | 8445                    | 1605                              | 19.0             | 1706                               | 49.3        | 0.7          | 45.5        | 4.6         |
| Békés                 | 5631                    | 244                               | 4.3              | 267                                | 60.5        | 3.1          | 13.9        | 22.5        |
| Csongrád              | 4263                    | 329                               | 7.7              | 348                                | 51.6        | 1.4          | 29.3        | 17.6        |
| Southern Great Plain  | 18339                   | 2178                              | 11.9             | 2322                               | 50.9        | 1.0          | 39.5        | 8.5         |
| <b>Total</b>          | <b>93030</b>            | <b>18364</b>                      | <b>19.7</b>      | <b>19676</b>                       | <b>57.0</b> | <b>0.8</b>   | <b>36.8</b> | <b>5.4</b>  |

Source: State Forest Service Database, Data as of Jan. 1, 2004.

The category "unknown" covers areas belonging to new forest owners not yet registered as forest managers, who became owners during the system change. Before the transition the ratio of private forest was below 1 %.

## ● Distribution of forests by primary function

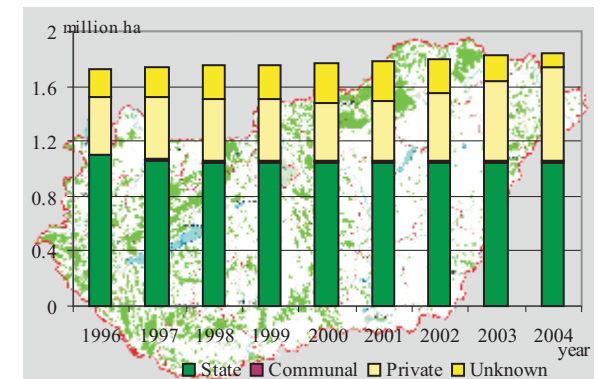


Source: State Forest Service, "Report on Forestation and Fellings in 2003"

Protection forests include protective forests (soil, wildlife, water, settlement protection, etc.) and protected forests (e.g. in protected natural areas). Their area and ratio has been increasing for decades.

## ● Changes in forest area and afforestations

Changes in forest area, 1996-2004<sup>1</sup>



<sup>1</sup>Following the application of LIV Act of 1996. Source: State Forest Service

The forest ratio increased from 11.9 % to 19.7 % between 1938 and 2004.

## Afforestation in the past decade (initial plantings)

| Growing year | State sector | Other forms of man. (1,000 ha) | Total |
|--------------|--------------|--------------------------------|-------|
| 1995-1996    | 0.4          | 6.2                            | 6.6   |
| 1996-1997    | 0.4          | 7.9                            | 8.3   |
| 1997-1998    | 0.4          | 7.8                            | 8.2   |
| 1998-1999    | 0.4          | 8.3                            | 8.7   |
| 1999-2000    | 0.4          | 9.4                            | 9.8   |
| 2000-2001    | 0.3          | 12.8                           | 13.1  |
| 2001-2002    | 0.4          | 14.4                           | 14.8  |
| 2002-2003    | 0.3          | 11.7                           | 12.0  |
| 2003-2004    | 0.4          | 7.2                            | 7.6   |

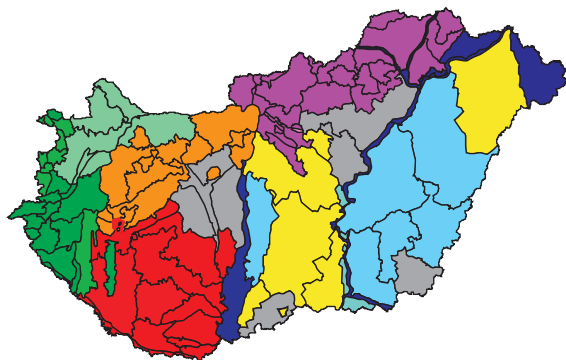
Source: State Forest Service "Report on Forestation and Fellings in 2004"

## Site conditions

| Distribution by height above sea-level (%) |      | Distribution by climates (%)        |      |
|--|------|-------------------------------------|------|
| - 150m                                     | 4.4  | Beech forest climate                | 8.7  |
| 151 - 350m                                 | 45.8 | Hornbeam-oak forest climate         | 38.5 |
| 351 - 750m                                 | 12.4 | Sessile oak - Turkey oak f. climate | 27.7 |
| 751 - 1015m                                | 0.4  | Forest-steppe climate               | 25.1 |

Source: State Forest Service Database, Data as of Jan. 1, 2004.

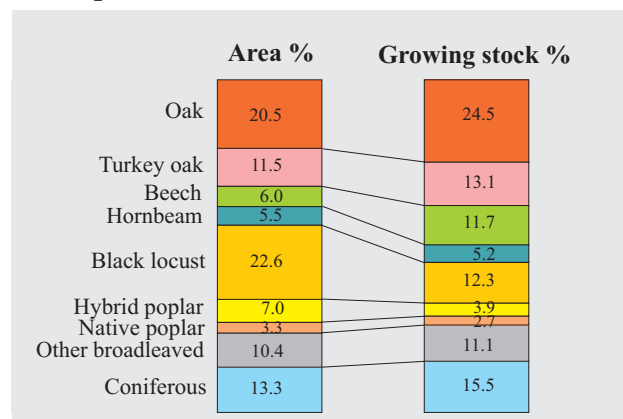
## Forest regions in Hungary



| Ratio of total forest area falling into each region (%) |      |                                |       |
|---|------|--------------------------------|-------|
| Western Transdanubia                                    | 11.3 | Great Plain, floodplains, bogs | 4.6   |
| Southern Transdanubia                                   | 17.1 | Great Plain, sandy region      | 19.6  |
| Small Plain   | 4.4  | Great Plain, saline region     | 3.5   |
| Transdanubia mt. range                                  | 14.3 | Great Plain, loess region      | 2.4   |
| Northern mountain range                                 | 22.8 |                                | 100.0 |

Source: State Forest Service Database, Data as of Jan. 1, 2004.

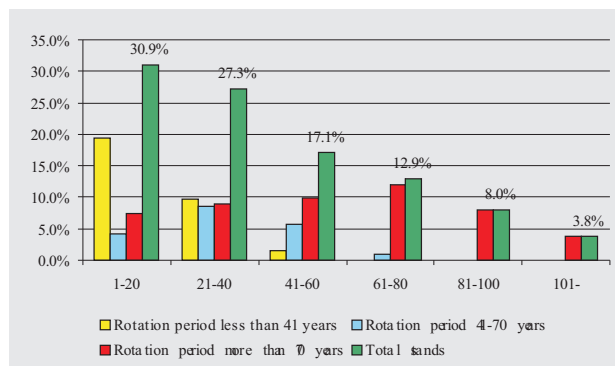
## Tree species distribution



Source: State Forest Service Database, Data as of Jan. 1, 2004.

56 % of the forest area is covered by indigenous species, and 44 % by either introduced (black poplar, red oak, coniferous) or cloned tree species (hybrid poplar).

## Age class distribution by area

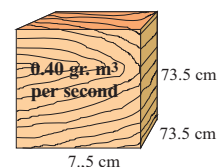


Source: State Forest Service Database, Data as of Jan. 1, 2004.

## Current annual increment and growing stock

| Current increment by species (%) |      |
|----------------------------------|------|
| Oak                              | 20.1 |
| Turkey oak                       | 8.1  |
| Beech                            | 7.0  |
| Black locust                     | 23.0 |
| Other hard broadleaved           | 8.2  |
| Poplar                           | 12.3 |
| Other soft broadleaved           | 6.4  |
| Coniferous                       | 14.9 |

Gross annual increment in Hungarian forests:  
12.5 million m<sup>3</sup>

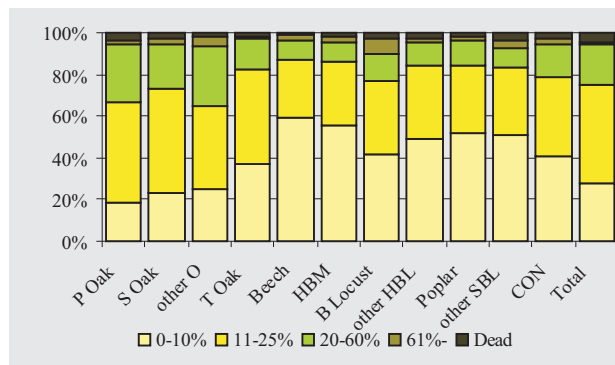


Source: State Forest Service Database

| Development of growing stock (million m <sup>3</sup> ) |       |              |       |
|--|-------|--------------|-------|
| Jan. 1, 2000   | 325.2 | Jan. 1, 2003 | 330.9 |
| Jan. 1, 2001   | 326.4 | Jan. 1, 2004 | 334.3 |
| Jan. 1, 2002   | 328.8 |              |       |

## Health conditions in 2004

Defoliation measured by the ICP Forests Monitoring System

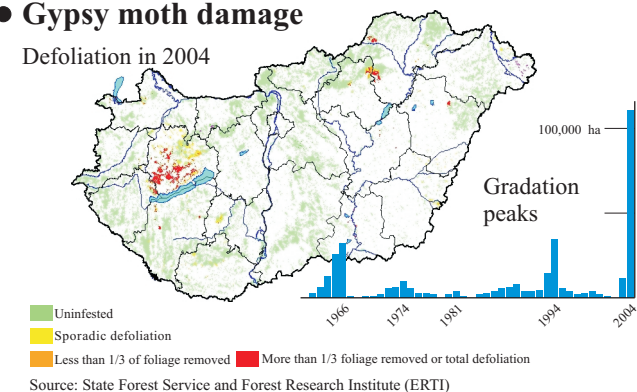


Source: State Forest Service Health Conditions Database, 2004.

Health conditions didn't characteristically changed. Due to more rain forests now have a fresher look.

## Gypsy moth damage

Defoliation in 2004



Almost 450 millions HUF from the national budget were spent in 2005 on reducing gypsy moth damage on a total area of approx. 40,000 ha. Managers' contribution to the defense is significant: they covered 50 % of expenses on 14,000 ha.

## Stock of game and hunting

Estimated stock of game and number of animals shot in 2003

| Region                     | Red deer     | Fallow deer  | Roe deer      | Mou-flon    | Wild boar    | Hare          | Pheasant      | Partridge    |
|----------------------------|--------------|--------------|---------------|-------------|--------------|---------------|---------------|--------------|
|                            | (pc)         |              |               |             |              |               |               |              |
| Middle Hungary             | 4387         | 2022         | 18247         | 1920        | 7055         | 34580         | 50266         | 6252         |
| Middle Transdanubia        | 17440        | 2146         | 35055         | 3173        | 16812        | 25769         | 62527         | 3325         |
| Western Transdanubia       | 20017        | 1235         | 41884         | 208         | 15038        | 27105         | 58515         | 5078         |
| Southern Transdanubia      | 24796        | 8989         | 52060         | 270         | 22416        | 22944         | 71371         | 758          |
| Northern Hungary           | 10384        | 283          | 31068         | 3654        | 14670        | 59286         | 85594         | 8204         |
| Northern Great Plain       | 763          | 1969         | 68750         | 112         | 4690         | 210426        | 248623        | 13603        |
| Southern Great Plain       | 4836         | 4289         | 77370         | 4           | 5956         | 250684        | 303709        | 13631        |
| <b>Total</b>               | <b>82623</b> | <b>20933</b> | <b>324414</b> | <b>9341</b> | <b>86637</b> | <b>630794</b> | <b>880605</b> | <b>50851</b> |
| <b>Animals shot (2003)</b> | <b>43224</b> | <b>8437</b>  | <b>76845</b>  | <b>2936</b> | <b>81468</b> | <b>102441</b> | <b>391292</b> | <b>2446</b>  |

Source: Agricultural Economics Research Institute (AKII)

National trophy judgement in 2003 (CIC scoring system)

|             | Total judged (pc) | Medal-winning (pc) |        |        |
|-------------|-------------------|--------------------|--------|--------|
|             |                   | Gold               | Silver | Bronze |
| Deer        | 10265             | 249                | 1030   | 1910   |
| Fallow deer | 1721              | 180                | 155    | 198    |
| Roe deer    | 29509             | 296                | 651    | 1001   |
| Mouflon     | 793               | 68                 | 112    | 105    |
| Tusker      | 4744              | 294                | 391    | 694    |

Source: Report of National Trophy Awarding Commission

Damages in forestations caused by game

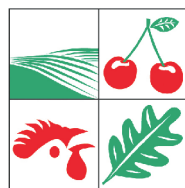
| Growing year | Quantitative damage (ha) | Qualitative damage (ha) |
|--------------|--------------------------|-------------------------|
| 1998-1999    | 226                      | 4987                    |
| 1999-2000    | 313                      | 4807                    |
| 2000-2001    | 715                      | 5219                    |
| 2001-2002    | 475                      | 5944                    |
| 2002-2003    | 427                      | 6470                    |
| 2003-2004    | 610                      | 5565                    |

Source: State Forest Service, technical acceptance protocols of forestations



FOREST RESOURCES,  
FORESTRY AND  
WOOD MANAGEMENT IN

*Hungary*



Published by  
**MINISTRY OF AGRICULTURE AND RURAL  
DEVELOPMENT,  
Forestry Department**  
Budapest, 2005.

● **Forestation (regeneration and afforestation)**

Achievements in the growing year 2003-2004

|   | State sector | Other forms of management (ha) | Total |
|---|--------------|--------------------------------|-------|
| <b>Initial stand establishment</b>                            |              |                                |       |
| Natural regeneration by seed                                  | 2761         | 653                            | 3414  |
| Natural regeneration by sprouts                               | 2567         | 4607                           | 7174  |
| Artificial regeneration                                       | 6621         | 4244                           | 10865 |
| Total regeneration  | 11949        | 9504                           | 21453 |
| Total afforestation   | 437          | 7137                           | 7574  |
| Total initial stand establishment                             | 12386        | 16641                          | 29027 |
| Total blank filling   | 6141         | 5898                           | 12312 |
| Total initial s. e. and blank filling                         | 18800        | 22539                          | 41339 |
| <b>Established plantations</b>                                |              |                                |       |
| Established regenerations                                     | 10651        | 8648                           | 19299 |
| Established afforestations                                    | 553          | 9749                           | 10302 |
| <b>Work invested in 1 ha of established plantation (year)</b> |              |                                |       |
| Established regenerations                                     | 1.3          | 1.3                            | 1.3   |
| Established afforestations                                    | 1.3          | 1.1                            | 1.1   |
| <b>Felling site not yet regenerated</b>                       | 2032         | 7362                           | 9394  |
| <b>Area with delayed regeneration</b>                         | 1908         | 9763                           | 11671 |

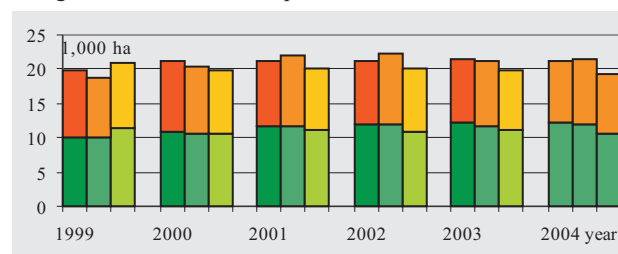
Forest regeneration includes compensatory planting.

Potential forest types in forestations (initial stand establishment)

|                                   | Regeneration | Afforestation | Total forestations |
|-----------------------------------|--------------|---------------|--------------------|
|                                   | (1,000 ha)   |               |                    |
| Oak                               | 0.4          | 6.2           | 6.6                |
| T. oak, other hard broadleaved    | 0.4          | 7.9           | 8.3                |
| Beech                             | 0.4          | 7.8           | 8.2                |
| Black locust                      | 0.4          | 8.3           | 8.7                |
| Hybrid poplar and white willow    | 0.4          | 9.4           | 9.8                |
| Native poplar, other soft broadl. | 0.3          | 12.8          | 13.1               |
| Coniferous                        | 0.4          | 14.4          | 14.8               |
| Total                             | 0.3          | 11.7          | 12.0               |

Source: State Forest Service "Report on Forestation and Fellings in 2004"

Obligations and established plantations, 1999-2004



The three columns from left to right show the obligations, initial stands and established plantations respectively. The lower part of each column represents the state sector, the upper represents other forms of management.  
Source: State Forest Service "Report on Forestation and Fellings in 2004"

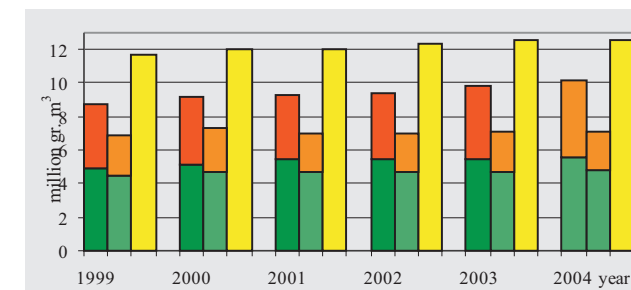
● **Fellings**

Gross fellings in 2004

|                               | State sector | Other forms of management | Total                       |
|-------------------------------|--------------|---------------------------|-----------------------------|
| <b>By type of felling</b>     |              |                           | (1,000 gr. m <sup>3</sup> ) |
| Final cutting                 | 3139         | 1702                      | 4841                        |
| Increment thinning            | 583          | 140                       | 723                         |
| Selection thinning            | 449          | 249                       | 698                         |
| Cleaning                      | 206          | 139                       | 345                         |
| Sanitary cutting              | 345          | 86                        | 431                         |
| Other                         | 32           | 25                        | 57                          |
| Total                         | 4754         | 2341                      | 7095                        |
| <b>By area</b>                |              |                           | (ha)                        |
| Reduced area of final cutting | 11983        | 8857                      | 20840                       |
| Area of increment thinning    | 14756        | 4039                      | 18795                       |
| Area of selection thinning    | 17895        | 8895                      | 26790                       |
| Cleaning area                 | 18836        | 10132                     | 28968                       |
| <b>By tree species groups</b> |              |                           | (1,000 gr. m <sup>3</sup> ) |
| Oak                           | 895          | 224                       | 1119                        |
| Turkey oak                    | 832          | 191                       | 1023                        |
| Beech                         | 628          | 91                        | 719                         |
| Hornbeam                      | 268          | 88                        | 356                         |
| Black locust                  | 572          | 891                       | 1463                        |
| Other hard broadleaved        | 152          | 41                        | 193                         |
| Hybrid poplar                 | 468          | 465                       | 933                         |
| Native poplar                 | 142          | 64                        | 206                         |
| Other soft broadleaved        | 172          | 99                        | 271                         |
| Coniferous                    | 625          | 187                       | 812                         |
| Total                         | 4754         | 2341                      | 7095                        |

Forest regeneration includes compensatory planting.

Total fellings and current annual increment, 1999-2004



The three columns from left to right show exploitable stock as planned in management plans, actual fellings and current annual increment respectively. The lower part of each column represents the state sector, the upper represents other forms of management.  
Source: State Forest Service Database and "Report on Forestation and Fellings in 2004"

Exploitable stock is determined by **ten-year management plans** based on the requirements of sustainable forest management and prepared by the state. Fellings are authorized and executions are recorded yearly by forest authorities.